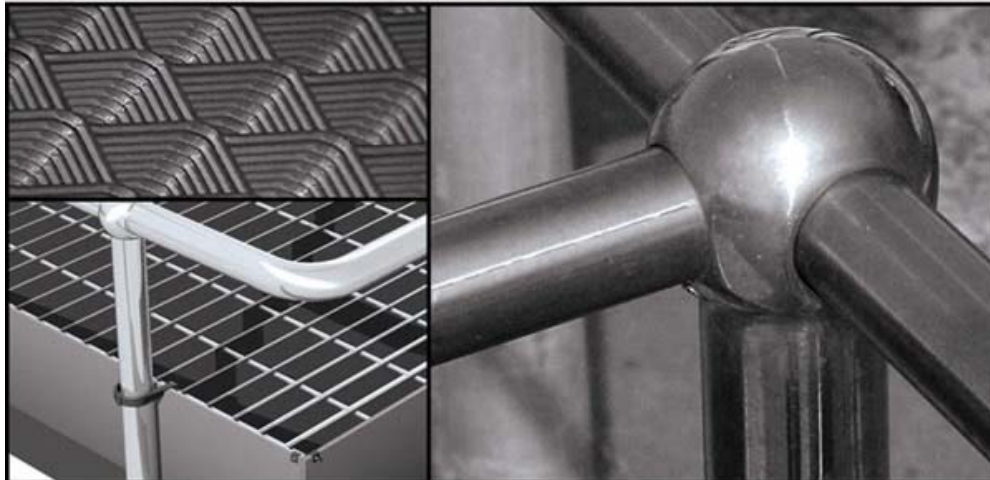




VITAL ENGINEERING & ANGUS MCLEOD



gratings • expanded metal • handrails • vitagrid • maclock • vitacon • vitex

Your **First** Choice.
Vital support.

Content

Vital Engineering Introduction.....	02
Grating Terminology.....	03
Vitagrid Walkway Flooring.....	05
Vitagrid Heavy Duty Flooring.....	07
Vitagrid Aluminium Flooring.....	08
Vitagrid Stainless Steel Flooring.....	09
Standard Flooring Panels.....	10
Diamond Pattern.....	11
Stairtreads.....	12
Vitacon.....	14
Vitaglass Gratings.....	15
Vitex Expanded Metal.....	18
Load Tables.....	19
Handrailing Products.....	23
Fixings.....	28
Supa Service.....	29
Interactive CD.....	30



YOUNG & GROWING



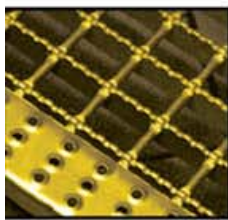
NATIONAL ACCREDITATION
OF CERTIFICATION BODIES

ENISO 9001-2000

Stairtreads

In order to offer our clients a complete system, we have tabulated our standard range of stairtreads. These types are available in the VE40 series with the bearing members shown. For economical reasons we suggest these sizes be adhered to. Other materials such as stainless steel, aluminium and 3CR12 are also available.

Material	Bearing Bars	Series	Span in mm		
Mild Steel	25 x 4.5	VE40	600	750	---
	30 x 4.5	VE40	600	750	900
	40 x 4.5	VE40	750	900	1000



ST1 - VEZ

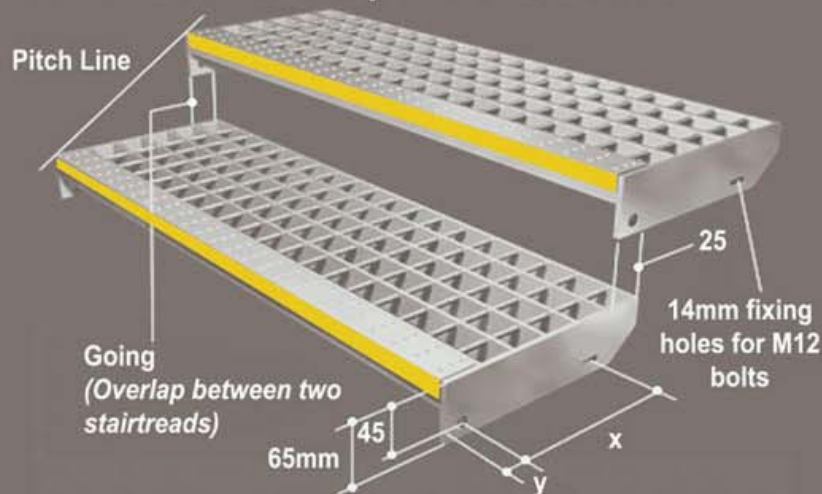


ST2 - VEDZ



ST3 - VFZ
Econotread

Stairtread Sideplate Detail



Length of Tread	Dimension x	Dimension y
210 mm	115 mm	30 mm
250 mm	115/150 mm	30 mm
300 mm	115/150 mm	30 mm
310 mm	115/150 mm	30 mm

Econotread

Now a truly innovative and new cost saving Serrated non slip tread for the industrial market with **greater loadability and strength** than conventional treads. Our patented design gives buying peace of mind for the continued high standard and quality that the only ENISO 9001-2000 design and development certificated grating manufacturer in South Africa has to offer. Simple design excellence at it's best with no compromise. Fully tested by recognised institutions with remarkable results. Copies of tests available on request. Loadings based on 1.5kN over a 150 x 150mm area with deflection not exceeding **1/200 of span**. This robust tread ensures minimal deflection and avoids permanent set which avoids unsafe U-shaped treads you always have to replace.

Using the loading table

Figures are for a 1,5kN load applied at the FRONT of the tread over a 150 x 150mm area.

STAIRTREAD			DEFLECTIONmm			HOLE CENTRES mm	
Width mm	Length mm* ℓ	Specification	Front d	Rear d	Allowable d	Front 14mm	Centre to Slot
1000	250/300	1000-40-25-ℓ*	3.14	3.03	5	30	150
900	250/300	900-40-25-ℓ*	2.63	1.65	4.5	30	150
750	250/300	750-40-25-ℓ*	1.49	0.5	3.75	30	115

When specifying to ensure you get the product you want please use the following as an example:

Quantity required - Econotread - specification required - finish or material grade

*eg: * ℓ - 50 off Econotread 900-40-25-250 galvanised for 250mm long treads or 900-40-25-300 for 300mm long treads.*

** ℓ = 250 or 300 eg: 1000-40-25-250*

Note: Test results are based on mild steel and should improve should stainless steel or 3CR12 be required due to the chemical make up of these materials.

Contact Us

Vital Engineering (Pty) Ltd & Angus McLeod & Co (Pty) Ltd

P.O. Box 6099, Dunswart, 1508
Lea Road, Anderbolt, South Africa
Telefax: +27 (11) 918 3000
Tel: +27 (11) 898 8500
E-Mail: sales@gratings.co.za

Vital Sales Durban (Pty) Ltd

Tel: +27 (31) 902 3059
Fax: +27 (31) 902 2948
E-Mail: vitaldbn@gratings.co.za

Vital Sales Cape Town (Pty) Ltd

Tel: +27 (21) 534 1429
Fax: +27 (21) 534 6127
E-Mail: vitalct@gratings.co.za



www.gratings.co.za



VITAL ENGINEERING
& ANGUS MCLEOD